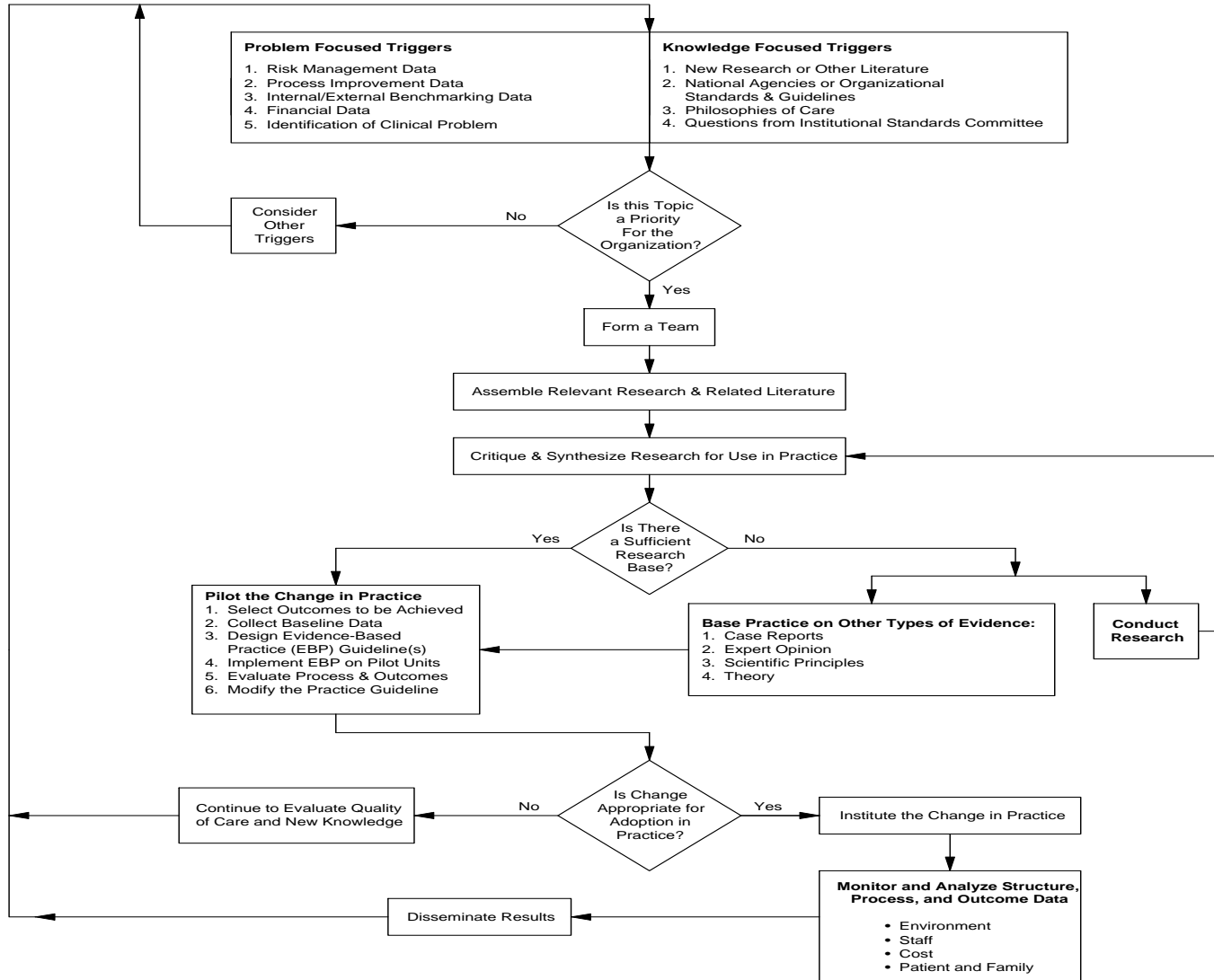


The Iowa Model of Evidence-Based Practice to Promote Quality Care



◊ = a decision point

Reference

Titler, M.G., Kleiber, C., Steelman, V., Rakel, B., Budreau, G., Everett, L.Q., Buckwalter, K.C., Tripp-Reimer, T., & Goode C. (2001). The Iowa Model of Evidence-Based Practice to Promote Quality Care. *Critical Care Nursing Clinics of North America*, 13(4), 497-509.

DO NOT REPRODUCE WITHOUT PERMISSION

REQUESTS TO:
Marita Titler, PhD, RN
Office of Nursing Research
The University of Iowa Hospitals and Clinics
Iowa City, IA 52242-1009
Revised April 1998 © UIHC